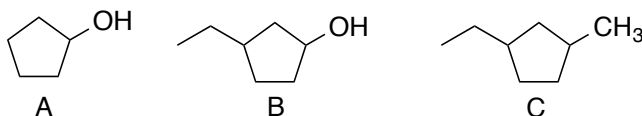
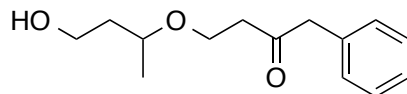


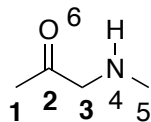
1. Which **one** of the following statements regarding compounds A-C is true?
- B** has the **highest boiling** point and the **highest water solubility**
 - A** is **highest boiling** and has the **highest water solubility**
 - B** is **highest boiling**; **C** has the **lowest water solubility**
 - A** is **highest boiling**; **B** has the **highest water solubility**



2. Which functional group is **not** found in the following structure?
- alcohol
 - arene (aromatic)
 - ester
 - ketone



3. Which one of the following statements is **true** regarding the structure shown?
- The only sp^2 -hybridized atom is C-2.
 - The only sp^3 -hybridized atoms are C-1, C-3, and C-5.
 - C-2, O-6, and N-4 are all sp^2 hybridized
 - C-2 and O-6 are sp^2 -hybridized; N-4 is sp^3 hybridized.



4. The CCC bond angle (relative to the central carbon) in acetone, CH_3COCH_3 is:
- $\sim 90^\circ$
 - $\sim 109^\circ$
 - $\sim 120^\circ$
 - $\sim 180^\circ$
5. For the 3 pairs of structures shown, which of the following statements is true?
- A** are the same; **B** are the same; **C** are structural isomers
 - A** are stereoisomers; **B** are the same; **C** are structural isomers
 - A** are the same; **B** are stereoisomers; **C** are stereoisomers
 - A** are stereoisomers; **B** are stereoisomers; **C** are structural isomers

